

MONTHLY MEMBERSHIP PROGRESS REPORT

District 5M 9

Results as of: 3/31/2024

GMT:

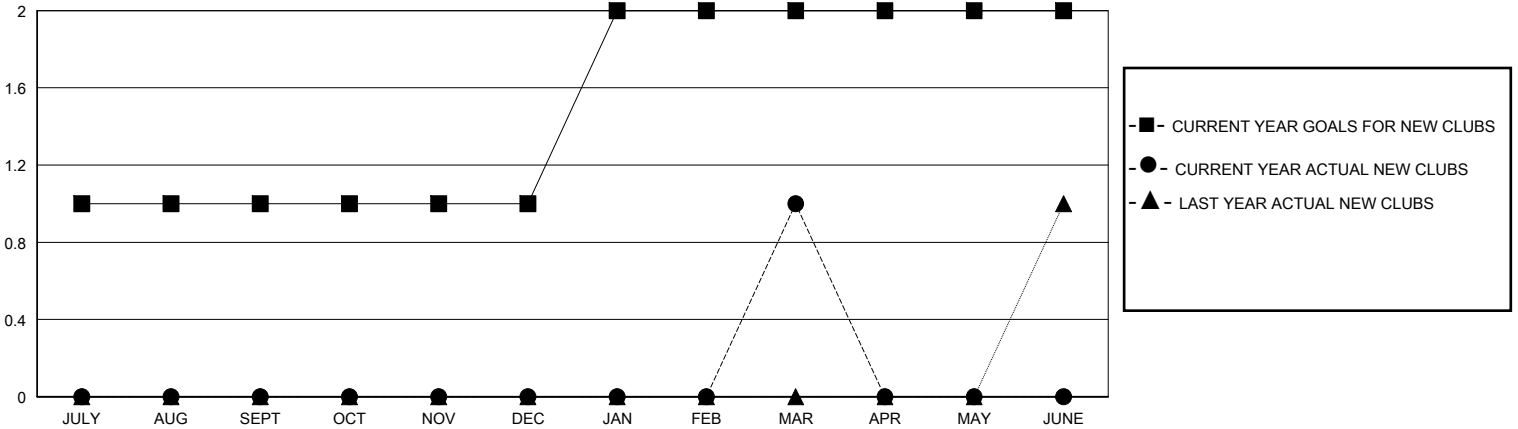
LOCATION MINNESOTA

GMT CA

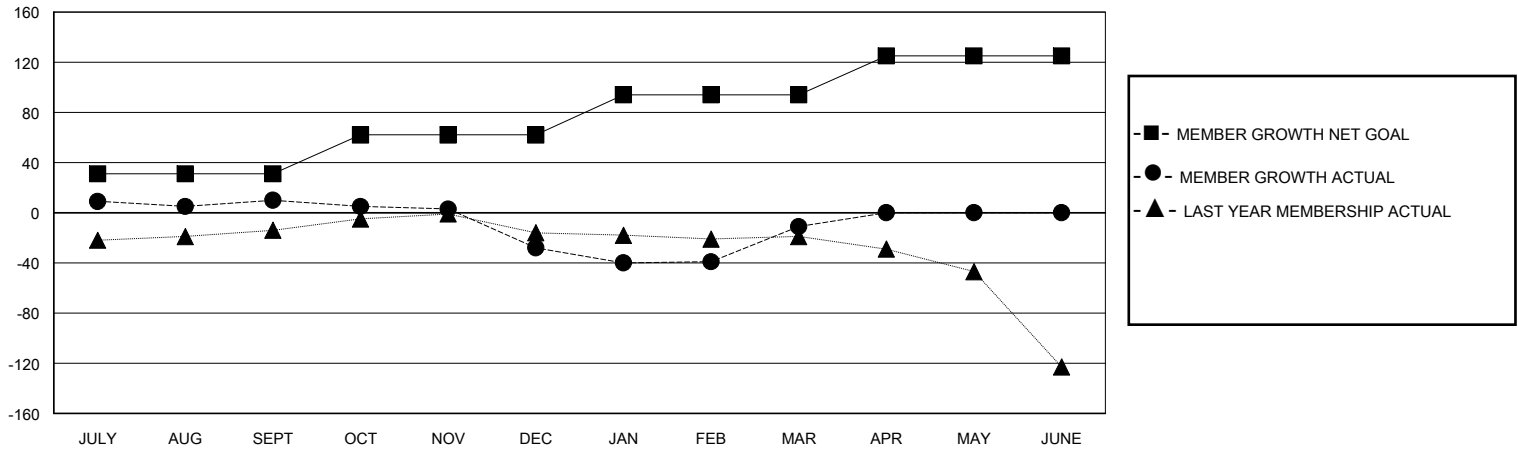
Clubs			
RESULTS FOR 2023-2024			
QUARTER	NEW CLUB GOAL	NEW CLUBS	DROPPED CLUBS
JULY/AUG/SEPT	1	0	0
OCT/NOV/DEC	0	0	0
JAN/FEB/MAR	1	1	0
APR/MAY/JUNE	0	0	0

Members			
RESULTS FOR 2023-2024			
QUARTER	MEMBER GROWTH NET GOAL	MEMBER GROWTH ACTUAL	DROPPED MEMBERS ACTUAL (including transfers)
JULY/AUG/SEPT	31	63	45
OCT/NOV/DEC	31	21	57
JAN/FEB/MAR	32	66	47
APR/MAY/JUNE	31	0	0

GOALS AND ACTUAL NEW CLUBS CUMULATIVE



GOALS AND ACTUAL MEMBERS CUMULATIVE



DROPPED CLUBS: 0	37 CLUBS OF 63 ADDED 1 OR MORE NEW MEMBERS	<u>GENDER DISTRIBUTION</u>	
<u>DROPPED MEMBERS</u>		MALE	1,150 (59.16%)
DECEASED	15	FEMALE	792 (40.74%)
CLUB CANCELLED	0	TOTAL FAMILY UNIT MEMBERS 607	
OTHER	134	FAMILY MEMBERS PAYING HALF DUES 305	
TOTAL	149		

[CLICK HERE FOR CUMULATIVE MEMBERSHIP DATA](#)